



ALTAIR I

SPUD BARGE

PRINCIPAL PARTICULARS

VESSEL TYPE	SPUD BARGE
SHAPE	BOX
YEAR OF BUILT	2014
PLACE OF BUILT	CHINA
FLAG	PANAMA
CLASS	IRS
GRT	2326 TONS
NRT	697 TONS
DEADWEIGHT	4900 TONS

PRINCIPAL DIMENSIONS

LOA	76.20 MTRS
BREADTH MOULDED	24.38 MTRS
DEPTH MOULDED	4.88 MTRS
DRAFT MOULDED	3.62 MTRS
LIGHT DRAFT	1.20 MTRS

BARGE MOORING SYSTEM

SPUDS	4 NOS
SPUD DIAMETER	120 CMTRS
SPUD LENGTH	18 MTRS
4 POINT MOORING SYSTEM	YES
SPUD WINCHES	4 X 15 TONS
WINCHES SPECIFICATION OF SPUDS	ELECTRO HYDRAULIC SINGLE DRUM WINCHES
ANCHOR	4 NOS - 3,000 KGS EACH
ANCHOR WINCHES	4 X 10 TONS
ANCHOR WIRE LENGTH	200 MTRS
POWER GENERATOR	2 X AC GENERATOR @ 1500 RPM
POWER GENERATOR CAPACITY	250 KVA + 80 KVA

DECK PARTICULARS

DECK STRENGTH	20 T/M2
DECK AREA	1857 M2

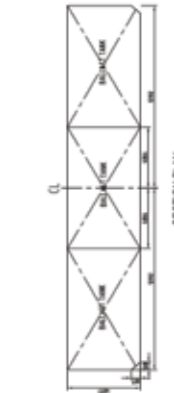
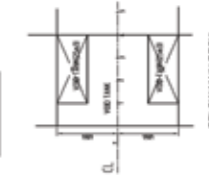
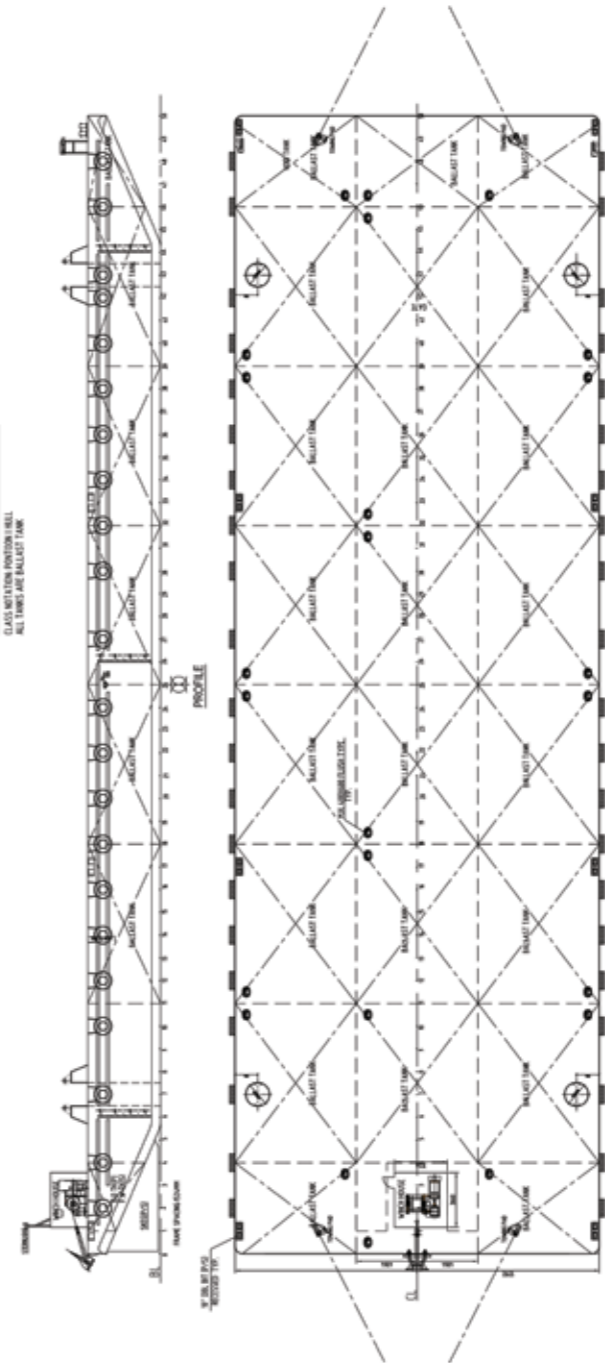
OTHER PARTICULARS

FRESH WATER TANK	10 TONS
------------------	---------

GENERAL PARTICULARS

LENGTH	76.20 M
BREADTH	24.38 M
DEPTH	4.88 M
DRAFT	3.62 M
DISPLACEMENT	4900 TONS
CLASSIFICATION	IRS
COLLISION PROTECTION	YES
COLLISION PROTECTION LEVEL	2

ALL DIMENSIONS ARE IN METERS



250' x 80' x 16' DECK COBALT-SPUD BARGE		DATE: 2014
GENERAL ARRANGEMENT		DRAWN BY: [Signature]
CLASS: [Blank]	S.C. No: [Blank]	DATE: 2014
DESIGNED BY: [Blank]	NO. OF SHEETS: [Blank]	NO. OF SHEETS: [Blank]
CHECKED BY: [Blank]	NO. OF SHEETS: [Blank]	NO. OF SHEETS: [Blank]
APPROVED BY: [Blank]	NO. OF SHEETS: [Blank]	NO. OF SHEETS: [Blank]
DATE: 23 Nov. 2011	NO. OF SHEETS: [Blank]	NO. OF SHEETS: [Blank]